

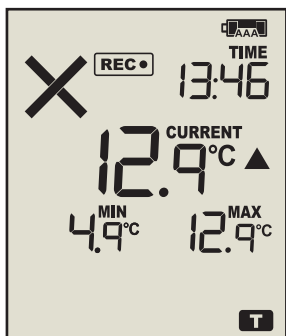
# RECOMMENDED VACCINE MONITORING LOGGER



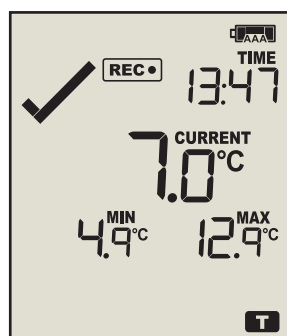
## UTRED30-16

30-day logger with display

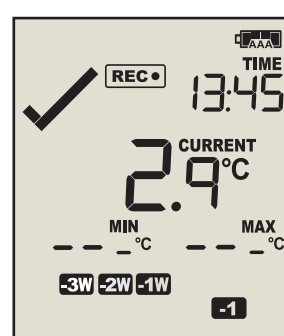
*"Meets or exceeds CDC guidelines"*



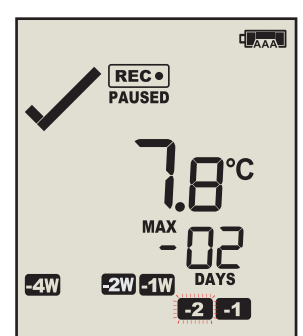
Recording - Upper Alarm



Recording - Alarm Cleared



Daily Min/Max Reset



Reviewing

- Read current temperature and latest Min-Max temperature at a glance.
- Check and reset Min-Max temperature reading at any time.
- Audible alarm and flashing red LED signals a temperature alarm.
- View alarm status for up to 30 days at a glance.
- External sensor and glycol buffer are supplied separately (depending on your application requirement).
- Powered by 2x AAA batteries (user replaceable) if not external powered.
- Can be powered via a standard plug-in power adaptor and a USB cable.
- Download data via LogTag Analyzer or as a PDF (no software required).

# LogTag Recorders

- Measure and store up to 16,000 time/temperature readings – enough for 67 days at 6 minute logging.
- Interchangeable external probe with high quality gold-plated connector.
- Record inspections at the push of a button.
- Auto-pause function suspends alarm and statistic processing when the external sensor is unplugged.
- Second battery backup via a coin cell to ensure no data is lost even if the power source and AAA batteries fail.
- Comprehensive customization options including sampling interval and alarm settings.
- Accessories include a range of external sensor options, wall mount bracket and glycol buffer.

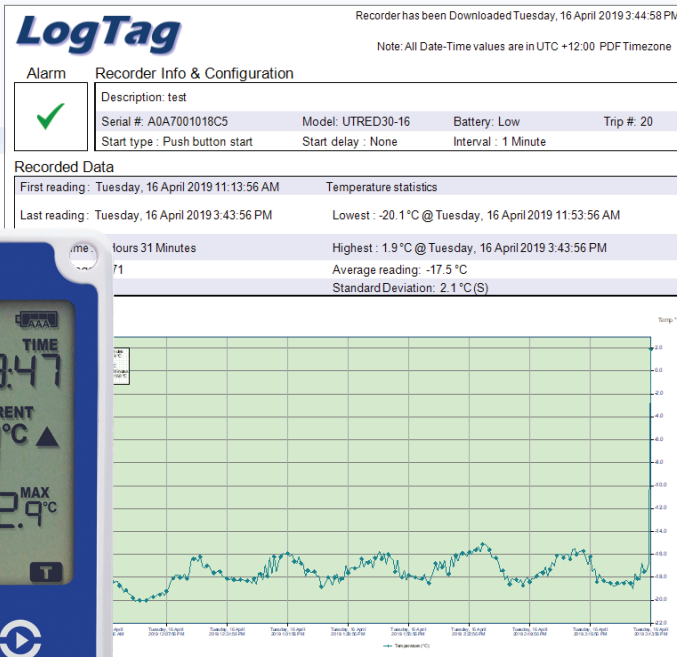
## Automatic PDF Report

The UTRED30-16 connects to a computer USB port for easy configuration by the user for a wide range of recording and alert conditions.

Upon download, it automatically generates a fully detailed PDF report with the option to download the data using the freely available LogTag® Analyzer software for a more detailed analysis. A red alarm indicator together

with X shown on display provides an immediate indication - without access to a PC - if any readings are outside the limits specified at the time the unit was configured.

Automatically generates an encrypted LogTag data file - for a more detailed analysis and to comply with FDA CFR21 Part 11.



<b>Product Model</b>	UTRED30-16.
<b>Sensor Measurement Range</b>	-40°C to +99°C. (-40°F to 210°F).
<b>Operating Temperature Range</b>	-30°C to +60°C (-22°F to +140°F).
<b>Storage Temperature Range</b>	-10°C to +40°C (14°F to +104°F).
<b>Rated Temperature Reading Resolution</b>	0.1°C or 0.1°F.
<b>Rated Temperature Reading Accuracy</b>	Better than ±0.5°C (±0.9°F) for -20°C to +40°C (-4°F to +104°F), typically ±0.3°C (0.6°F). Better than ±0.8°C (±1.4°F) for -40°C to -20°C (-40°F to -4°F), typically ±0.5°C (0.9°F). Better than ±0.8°C (±1.4°F) for +40°C to +70°C (+104°F to +158°F), typically ±0.7°C (1.3°F). Better than ±1.2°C (±2.2°F) for +70°C to +99°C (+158°F to +210°F), typically ±1°C (1.8°F).
<b>Recording Capacity</b>	16,129 temperature readings. 67 days at 6 minute logging. Day summary statistics memory (for display on LCD): up to 30 days of Min/Max/duration and alarm trigger statistics.
<b>Sampling Interval</b>	Configurable from 30 seconds to 18 hours.
<b>Logging Start Options</b>	Push button start (with configurable start delay from 1 minute to 72 hours) or specific date & time.
<b>Download Time</b>	Typically with full memory (16,129 readings) in less than 10 seconds.
<b>Environmental</b>	IP51 (when vertically mounted or hung with USB dust-cap in place).
<b>Power Source</b>	5V via micro USB socket or 2 x 1.5V AAA batteries. CR2032 LiMnO <sub>2</sub> coin cell (backup logging function only).
<b>Battery Life</b>	AAA battery up to 12 months - if unit is operated without power supply.
<b>Connection Interface</b>	USB 2.0 / Micro USB Socket.
<b>Size</b>	123mm(H) x 63mm(W) x 12.5mm(T).
<b>Weight</b>	250g with AAA batteries, (80g - excluding probe and AAA batteries).
<b>Case Material</b>	Polycarbonate.