

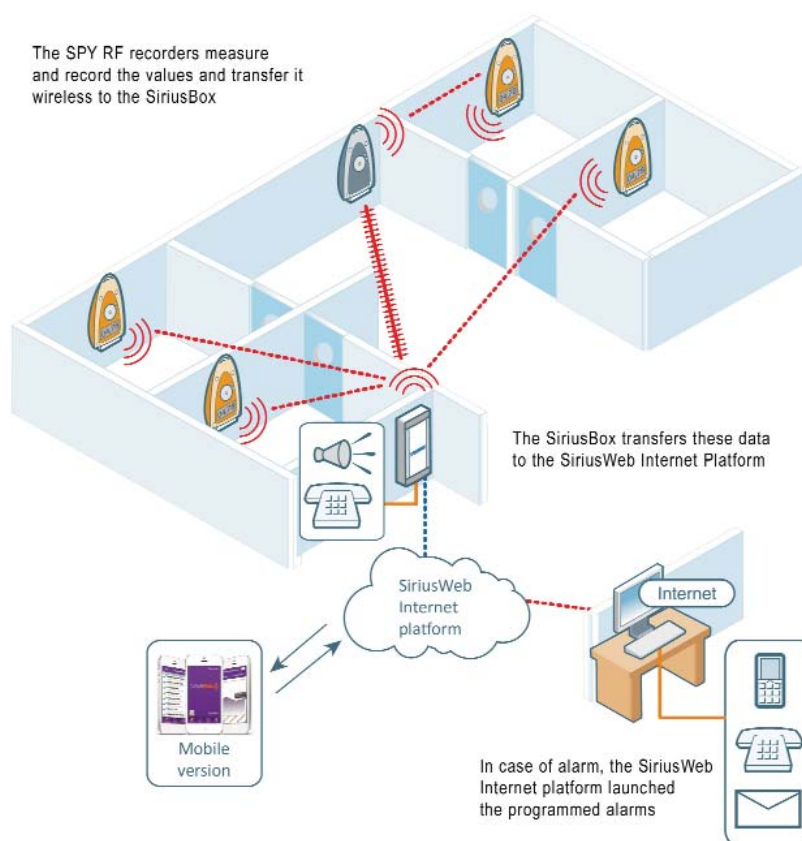


## Installation guide

**Congratulations** - you have just purchased a SiriusWeb solution. Once installed, SiriusWeb will allow you to monitor your storage or living areas and consult the measurements from any PC connected to the Internet.



## Function diagram



## Provided material

Unpack carefully your parcel and check that you have all the below mentioned items. Then proceed with the installation of the SPY RF and your SiriusBox as described below.

### 1- The SPY RF recorders



*Ambient probe model SPY RF T+, Green, Air and TH*



*Remote probe model SPY RF U, N and C*

2- The **SiriusBox** includes a wall mounting bracket and a power supply cord.

3- **One wall mounting bracket** for each SPY RF recorder (only supplied with remote probe SPY RF recorders).

4- **Double-sided adhesive** tape for each SPY RF recorder (only supplied with remote probe SPY RF recorders).

# Your **12** step installation guide

## 1

### Connect your probes

*Note: Go straight to Step 2 if you have an orange SPY RF T+, Mini SPY Green or SPY RF TH -type recorder.*

Connect the probes to the SPY RF only if you have a model with a remote probe (refer to the user manual of the SPY RF recorders).

## 2

### Install your SPY RF recorders

*Note: JRI advises you to consult your certified SPY RF installer in order to carry out the installation of the recorders properly.*



> **Ambient recorders (SPY RF T+, TH, Green, Air)**

Place the recorder(s) in an upright position inside the compartment/chamber/area you want to monitor, about two thirds up.

or



> **Remote recorders (SPY RF U, N or C)**

Place the recorder(s) outside the compartment/chamber/area in an upright position as high up as possible on the exterior partition (of the compartment/chamber). A wall mounting bracket and double-sided adhesive tape are provided for this purpose.

The probe connected to the recorder must be placed in the centre inside the compartment/chamber/area in order to register a temperature as uniform as possible.

Put the flat cable of the probe through the door seal at the level of the hinges of your compartment/chamber.

## 3

## Install your SiriusBox



Choose an appropriate place on the wall close to a socket. It is important that you are in a GSM coverage area. The SiriusBox must be placed at a reasonable distance from the SPY RF recorders (max. 50 m).



Fix the wall mounting bracket to the wall in an upright position (at a height of 2 m minimum and 50 cm from the ceiling). The release lever should turn upwards. Depending on the surface of the wall, use two screws or double-sided adhesive tape or Velcro.



Fasten the SiriusBox on the wall mounting bracket by sliding it upwards, then downwards until you hear a click.

*(note: to unfasten the SiriusBox, push gently on the release lever, push the box upwards and then downwards).*

## 4

## Connect your SiriusBox



Plug the adapter into the socket.

At the bottom of the box, the first green LED lights up indicating that the SiriusBox is powered.



The second green LED lights up when the connection to the GSM network is established. It turns on 10-30 seconds after being connected. If it does not, this means that there is an insufficient GSM coverage. In this case, move the device and try again.



The yellow LED indicates that data exchanges between the SiriusBox and the SPY RF recorders are taking place.



The red LED indicates that an alert is on.



Ethernet version : If you have a POE, simply connect the Ethernet cable to your Internet box without using the power supply. After 5 seconds, the second green LED lights. You can log on [www.siriusWeb.fr](http://www.siriusWeb.fr) and set your configuration.

Do not forget to validate your configuration!

## 5

### Start your recorders



If the temperature is not displayed on the SPY RF recorder(s), press the push-button for at least 5 seconds to set it going (refer to the user manual of the recorders...). Your system is now working.

## 6

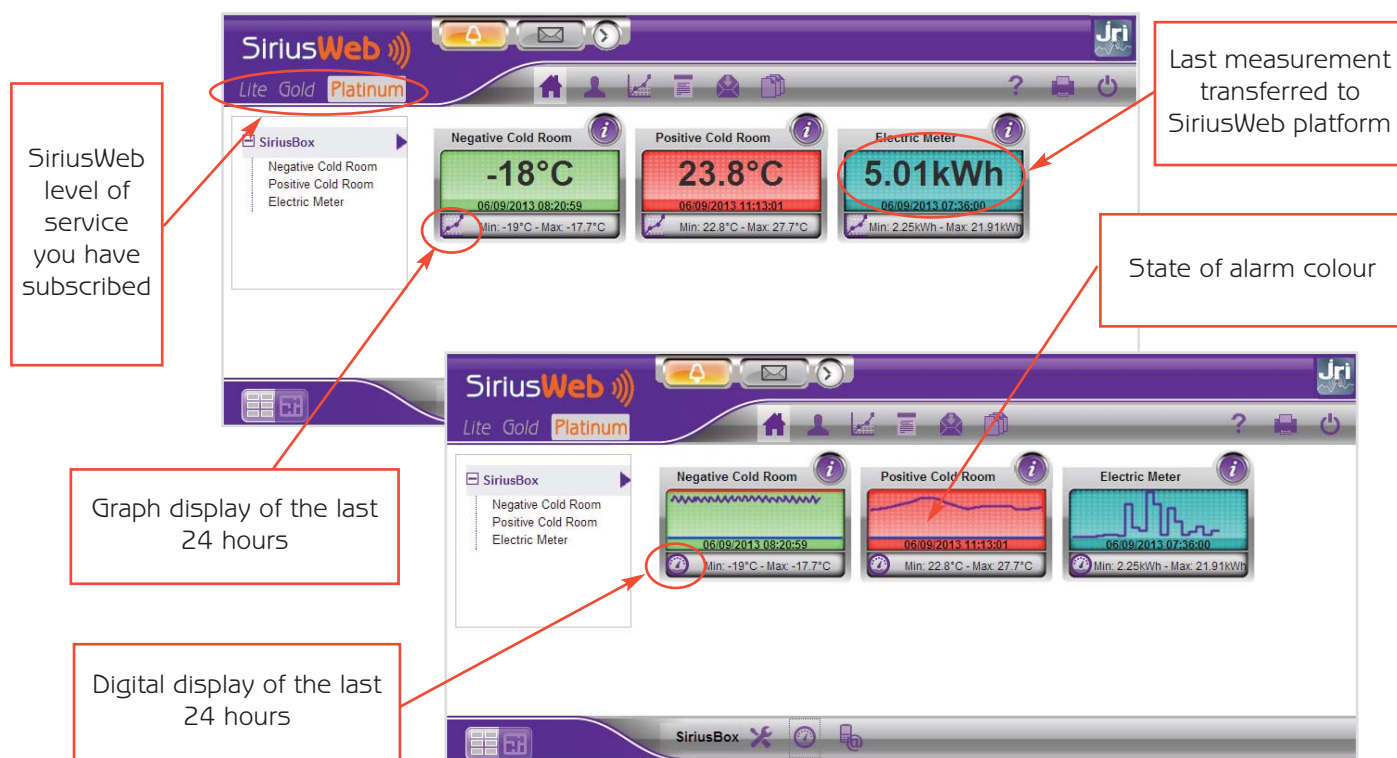
## Log on to the SiriusWeb

Log on to the [www.jri-maxant.com](http://www.jri-maxant.com) website using your login and password. Click "CUSTOMER ACCESS" in the upper right corner. A window appears. Enter your login and password, then click "OK" .

## 7

## Display

General consultation of all your monitored units (M.U.) straight from the home page.




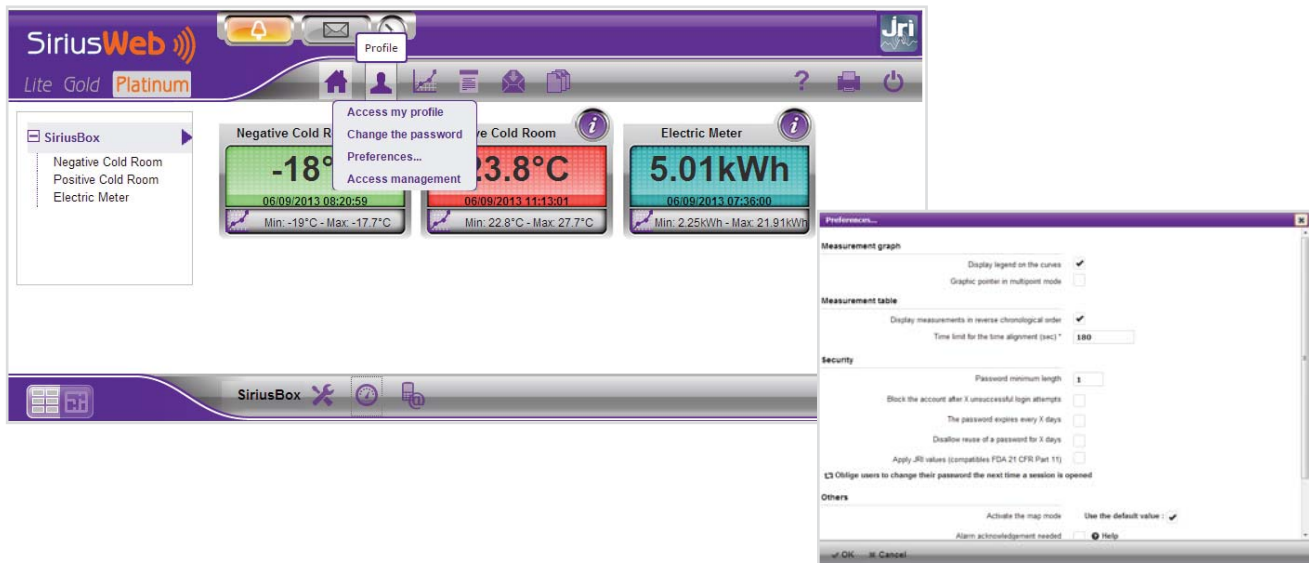
Note : Generally, the locally recorded data is transferred to the SiriusWeb platform every 3 hours to be displayed.



## 8

## Manage your profiles (Site manager only)


When you click "PROFILE" , you can set different logins and passwords to access the SiriusWeb website and then manage multiple profiles: user, administrator...

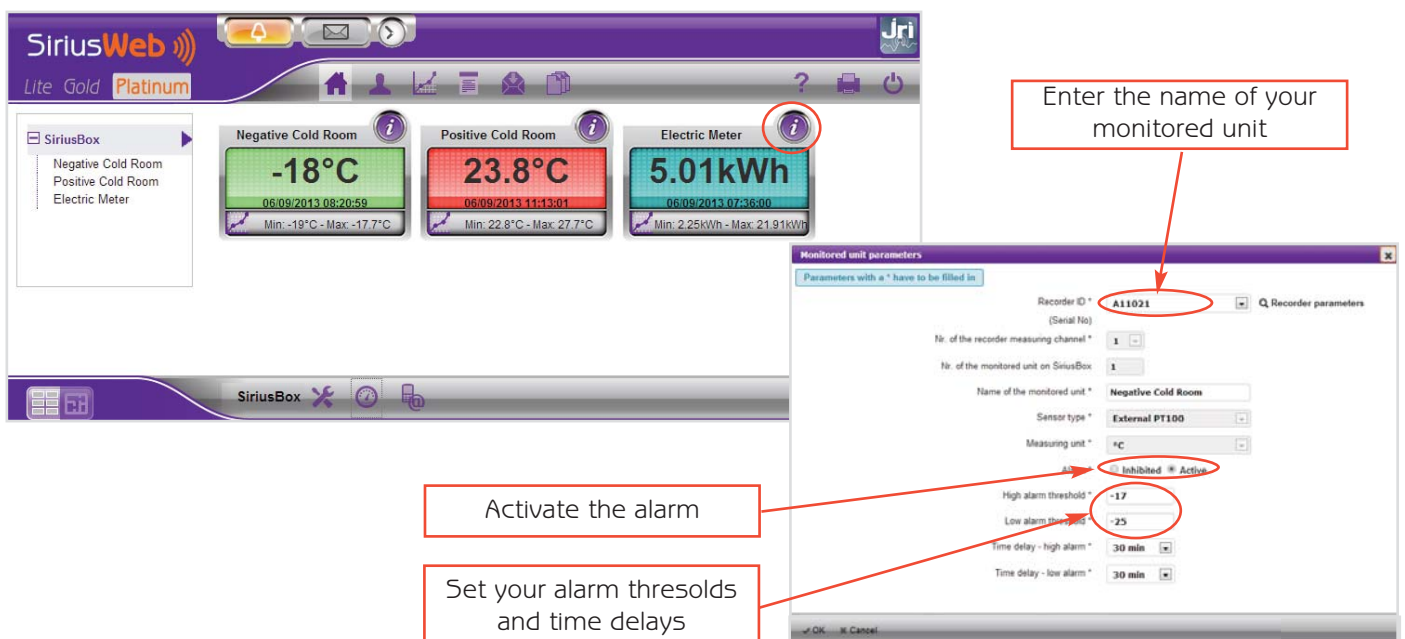


## 9

## Activate your threshold alarms and your time delays

(Site manager only)

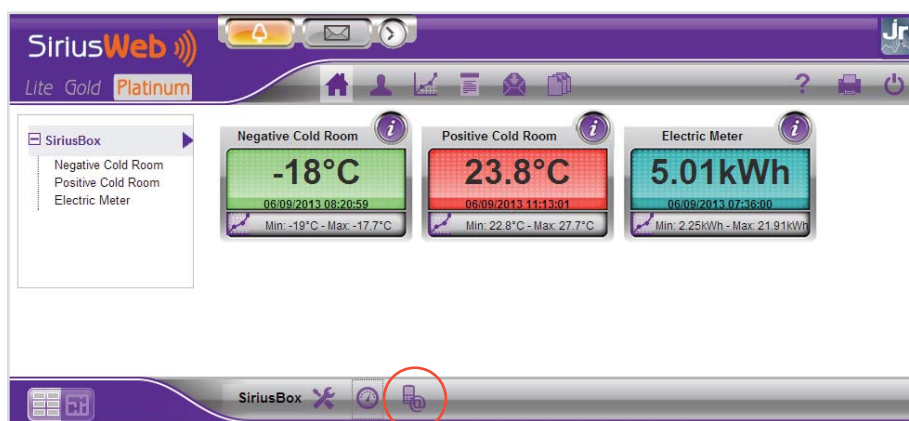
Click on the button  to open the monitored unit parameters. Enter the name of your monitored unit and activate the alarm of your recorder. Set also your alarm thresholds and time delays. Once these fields are filled in, click on "OK".



Note : JRI advises to have data for each monitored unit for at least a couple of days in order to determine the threshold values and the time delays.

JRI advises to set several different types of alarms.

Click on the "ALARM MANAGEMENT" icon

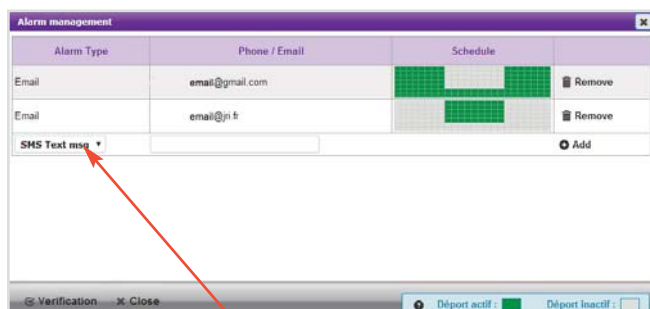


## A- Remote alerts

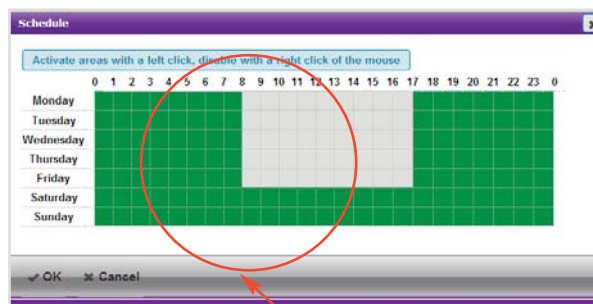
Configure your alert types (SMS text message, email, phone call) and your remote alarms according to the level of service you have subscribed.

The remote alarms planning is used to activate the monitored units' alerts during a specific period of time. Once the type of alerts is selected, click on "ADD".

You can choose hour by hour the recipient for each alert.



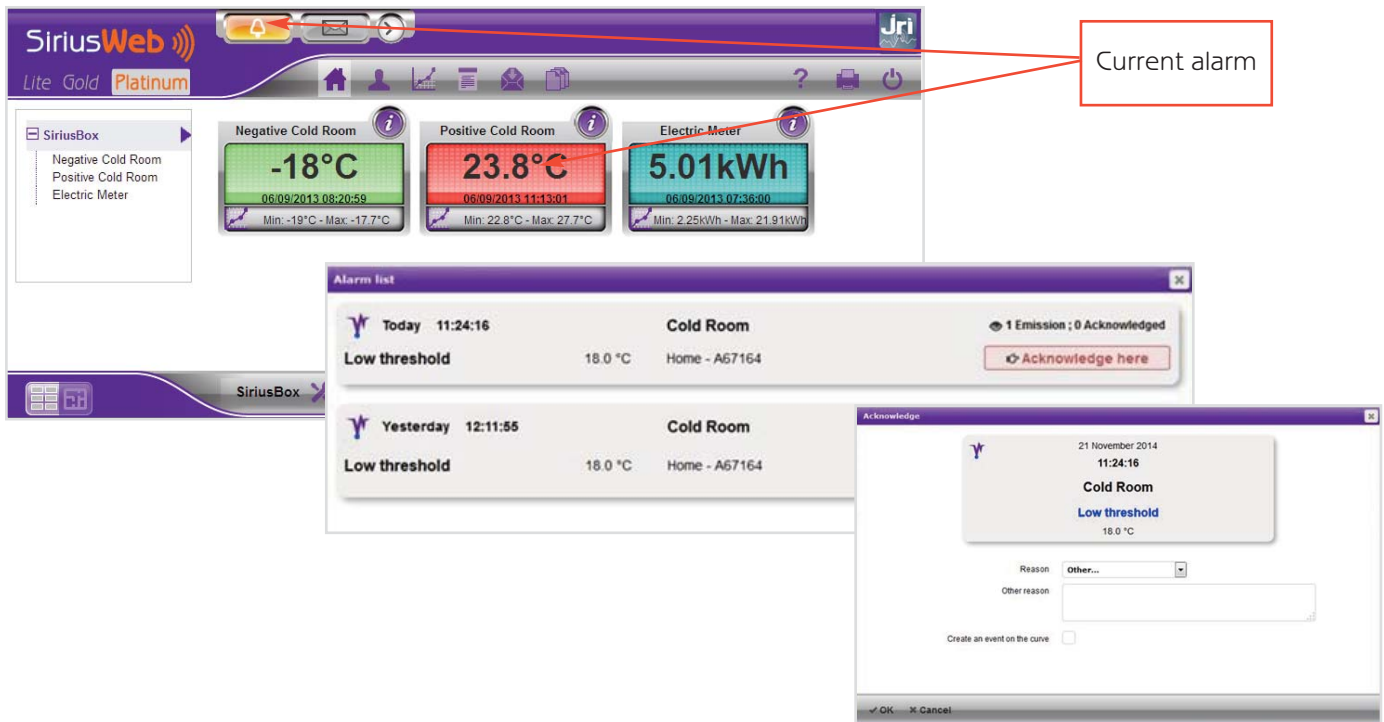
Alarm types



Remote alarms schedule

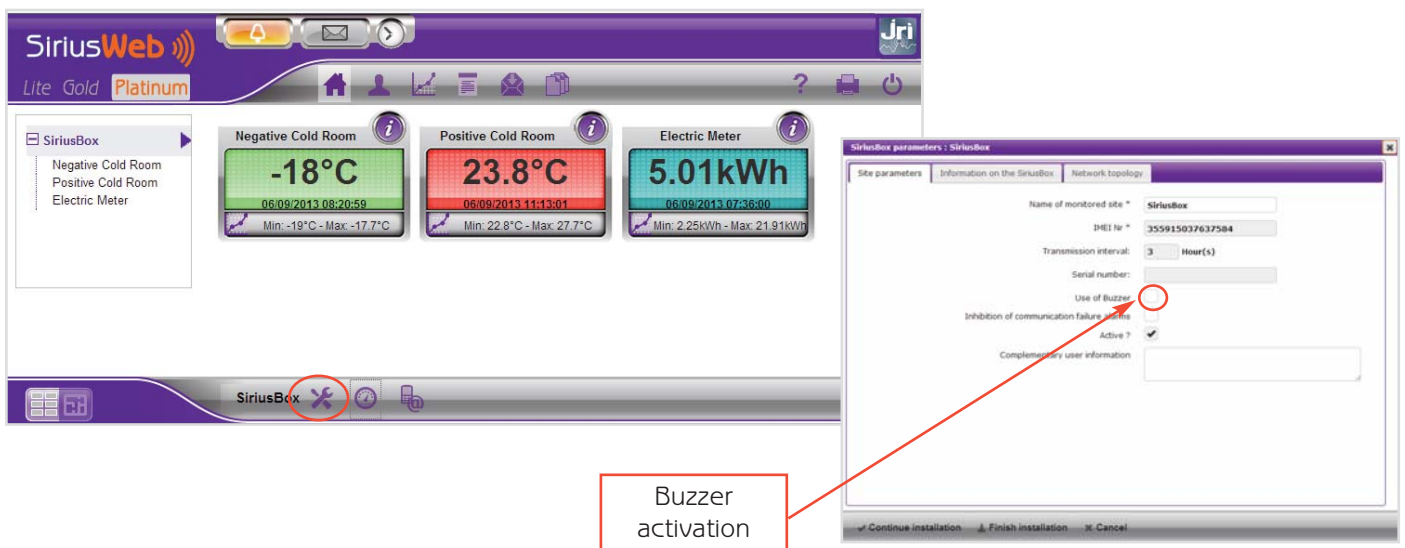


In case of alert, click on "ALARM LIST"  and indicate the reason of the alarm.




## B- Local alerts

If you want to be locally alerted, click on "SiriusBox parameters" and activate the buzzer of your SiriusBox which beeps in case of alarm.



In case of alarm, acknowledgment of the buzzer is achieved in the same way as for remote alarms.

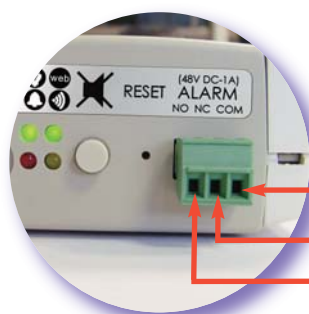
You can shut down the buzzer by pressing on push button 

However, it is necessary to give the reason of the alarm on the SiriusWeb interface.

If necessary (persistent default or problem to connect to SiriusWeb), it is possible to reset the SiriusBox by inserting a metal rod (paperclip) into the hole provided for this purpose (RESET).

Note : It is possible to install an additional alarm system allowing to send alarms even if the GPRS signal is down (voice dialer, sound and visual alarm device, transmission to a telemonitoring company ...).

Connection with an additional alarm system



Relay output :


Common

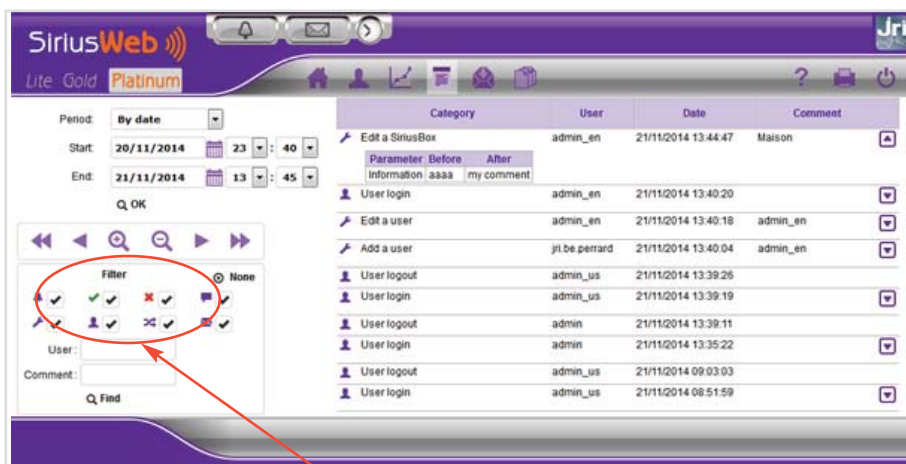
NC (normally closed)

No (normally opened)

## 11

### Review the Audit trail

While clicking on , you can review the complete list of operated actions on your installation. You can sort the information per type of events.



Filters

## 12

### Configure a weekly report by email

You can receive a weekly report (every Tuesday) presenting a sum up of your data.

To configure it, access your profile by clicking on the icon .

In "Preferences" select the case "Activate the remote reading" and type the email address of the addresse(s) of the report.

# 13

## Customize your SiriusWeb homepage

You can customize your SiriusWeb homepage.



You can add the logo of your company and choose a background picture and a pictogram to symbolize your installation.


To configure it, access your profile by clicking on the icon 

## Advice to check that your installation is working

Before going through the checking steps, please wait for 8 hours while the system is turned on.

Unplug the Sirius Box. You should receive an alert depending on the pre-programmed alerts.

If you don't receive any alert, follow the steps:

- 1/ Check your alerts programming (Buzzer and/or text message, email, voice message) on Sirius-Web.
- 2/ Check the connection of the power supply of the SiriusBox.
- 3/ The network must accept DNS queries from SiriusBox to allow its connection to the Internet SiriusWeb platform.
- 4/ GPRS version : Check the GPRS communication level. Click on  to access the information on the SiriusBox. The minimum level of communication is 2 grades.

Ethernet Version: Verify that the 13254 port is wide open.

Re-enter the username and password of the router or modem when connected to an Internet access point. For an automatic installation, the network must be set to DHCP.

For WIFI Version: Verify that the 13254 port is wide open.

Verify that the selected wireless network is available and accurately re-enter the identifier (SSID) and security key of the wireless network.

- 4/ Check the connection of the backup battery.



Open the Sirius Box with the help of a pen placing it inside both holes on the upper and down sides of the SiriusBox.



Connector

Backup battery

Check that the connector of the backup battery is connected to the electronic board.

Your installation should now be working. However if you still don't have any communication, please contact our technical support.

## Advice to check measurement upload

- 1/ Check that temperature is displayed on the LCD screen or that the leds are blinking.

- 2/ Check that the measurements of your monitored units displayed on SiriusWeb are less than 8 hours. If this is not, perform a refresh action and wait at least 10 minutes.

3 / Ethernet Version only: if the 13254 port is open, do a flow redirection to the port 13254. Below is the procedure in case of a Livebox :

- a. Go to the "Settings" tab. In the left menu "Networks & Services", click on "Livebox", then "Advanced Settings" and check the " Enable DHCP Server " box is checked.
- b . Then you must add a static IP address click on "Add" , enter the name "SiriusBoxV3" and type the IP address you want to assign. Make sure you enter an IP address outside the range of DHCP ! To add the MAC address , you have to look at the back of your SiriusBox.
- c . Then click the "NAT / PAT" tab and select "Create a new rule" in the dropdown list. Enter "13254" in "External Port" and "Internal Port" boxes and select "TCP" in the dropdown menu. In the "Devices" list, click on "SiriusWebV3" then "Save" .
- d. Connect the power supply to the SiriusBox, then plug the Ethernet cable. After 2 seconds, the second green LED should light up. The connection to the SiriusWeb platform is enabled.

If this is not the case, check the configuration again. Then, contact our Technical Support.

## In case of failure

If the lights are off, check the power of the SiriusBox by checking the plug.

If the SiriusBox does not work, perform a soft reset by inserting a metal rod (such as a paper clip) into the hole provided for this purpose (RESET).

If there are no longer measurements on SiriusWeb, check that the recorders are on. If they are off, press at least 5 sec their push button to turn them on. If they still do not start, replace the battery and turn on the recorders.

## Icons glossary

Switch the display mode to table mode

Refresh measurements of all monitored units linked to the SiriusBox

Add a comment

Display or not alarm thresholds on the curve(s)

Display measurements with the mouse-over the nearest curve or all the curves.

Select a fixed scale or a dynamic one

Select the display of the current day, week or month.

## Key features

### Radio features

Emission band	ISM 868 MHz
Maximum radiated power	10 dBm (10 mW)
Range with SpyRF satellites in buildings	Up to 50 meters depending on the environment

### GPRS features

Emission band	GSM 900 MHz or DCS 1800 MHz (depending on the operator of the mobile subscription)
Maximum radiated power	2W in GSM mode 1W in DCS mode

### Electrical features

Power supply	Adapter plug (European model) with regulated output voltage : input: 230 V CA output: 9 V CC - 650 mA cord fixed: 1,80 m
POE supply	Power Over Ethernet supply in option 3m Ethernet cable provided
Power consumption	Average consumption : 0,5 W Peak consumption : 5 W
Backup battery	NiMH capacity 650mAh
Backup battery lifetime	Fully operational autonomy : 12h rs Loading time : 100hrs

### Mechanical and environmental features

Dimensions	154x84x37 mm
Weight	270g (without adapter)
Protection index	IP20 - to be used indoors only
Conditions of use	0°C to 50°C - 0 to 90% RH
Pollution / altitude (IEC 61010-1)	Degree of pollution : 2 Operating altitude: 0 to 2000m

### Installation Precautions

SiriusBox hub must be fixed in a vertical position (such as that SpyRF satellites). A wall mounting bracket is provided. This support can be fixed to the wall with two screws, or with a double-sided adhesive (also provided). The SiriusBox should not be fixed on a metal surface and in a place with insufficient GSM network coverage. A socket should be available nearby (within a maximum of 3m) to allow plugging in the AC adapter. It serves as the disconnecting device.

### WARNING

This unit contains a rechargeable NiMH battery. Never attempt to disassemble, to charge and to short circuit. Always use the battery correctly, do not expose to temperatures above 100 ° C, do not wet and respect the polarities. Keep the battery out of the reach of children. Always replace the battery with the templates provided by JRI. They have a undeceived connector to prevent polarity reversal.

**JRI disclaims all liability for use of a different battery. In case of non-compliance with these instructions, alkalins hydroxides may leak from the valve safety.**



## Symbols



**RECYCLING:** Do not dispose in a landfill or in a container collection waste. Comply with the legislation for the disposal.



**ELECTRICAL POWER:** This unit is DC powered from a 230 V AC adapter. Comply with the safety rules in the use of electric power. Use an electrical installation complies with the legislation.



**CE MARKING:** This device is certified to the European regulations for electrical safety, flammability, radiation emission disturbing and immunity to electrical interference nearby.



**ELECTRICAL INSULATION:** This device is protected by a double electrical insulation or electrical insulation reinforced.

## Maintenance

No maintenance is necessary. For cleaning, do not use water but a dry cloth.

## Safety / Certifications

CE radio compliant : EN 301 489 / EN 300 220 / EN 61010 / EN 301 511

## Warranty

JRI products carry a one year warranty and guarantee against defects in their components or workmanship.

During this period if any product supplied by the Company proves on inspection to be defective, the Company will at its own option replace the same or refund to the Buyer the price of the product.

In no circumstances will JRI' liability exceed the price of the product paid by the buyer or the cost of replacement.

JRI shall not in any event be liable to the Buyer for any indirect or consequential loss or damage costs or expenses whatsoever which might arise out of or in connection with the supply of the product or its consequent use.

Consequently, the products warrantee and guarantee specified above, does not cover damage caused by fair wear and tear, abnormal storage conditions, incorrect use, accidental misuse, abuse, neglect, misapplication or modification, or use with non-JRI' hardware/software. No warranty of fitness for a particular purpose is offered and the user assumes the entire risk of using the product.

In line with our policy of continuous development, we reserve the right to amend our product specification without prior notice.

## Recycling

If it must be discarded, this equipment must be in compliance with the legislation on electronic equipment. It should never be disposed in the landfill or never be treated by the services of the road. For more information, call the JRI customer service.

## Important note

FCC ID Box=W4510620-03

FCC ID GPRS=N7NWI5MO228

### FREQUENCY

This device is designed to operate in the band [902.22 – 904.149] MHz.

### FCC COMPLIANCE STATEMENT

This device complies with part 15 of the FCC Rules. Operation is subject to the following two conditions: This device may not cause harmful interference, and must accept any interference received, including interference that may cause undesired operation.

### INFORMATION TO THE USER

The user's manual or instruction manual for an intentional or unintentional radiator shall caution the user that changes or modifications not expressly approved by the party responsible for compliance could void the user's authority to operate the equipment.

### FCC RADIATION EXPOSURE STATEMENT

The antenna(s) used for this transmitter must be installed to provide a separation distance of at least 20 cm from all persons.

## Minimal configuration

Internet Browser :

Internet Explorer 7 +, FireFox 1.0 + and Chrome 1.0 + and Safari 2.0 +.

Screen resolution: 1280px \* 680px at least

Javascript must be enabled.

## Mobile version of SiriusWeb

The mobile version of SiriusWeb allows to monitor your installation from your smartphone.

SiriusWeb is also available on AppStore, download the App and enter your login and password.



From your smartphone, use the following functions:

- Display all your monitored units : temperature values, thresholds, measurement graph
- Management of alarms and history
- Send email to our technical support

It is also available in German, Spanish, Italian, Portuguese and Dutch.



## Technical assistance

Our technical support is at your disposal on

**+33 3 63 15 80 07**

Indicate your SiriusWeb login

click 

in the upper right corner of the siriusweb.fr site in order to  
forward us your question.

or

click 

In the upper right corner of the SiriusWeb.fr  
website to access the FAQ