



Product Code: EI-1E-D-32-L

www.escortdls.com

- Large LCD display with multi function viewing
- Bookmark readings via a simple magnet swipe
- 0.1°C Resolution provides an informative advantage
- Customisable alarm settings and programmable start function
- Temperature range of -40°C to +70°C
- User-friendly multi-language software for easy programming and download

The Intelligent Logger

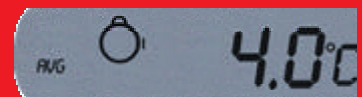


www.escortdls.com

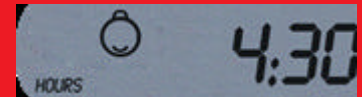
iLog Specifications

Product Code	EI-1 E-D-32-L
Temperature Range	Internal -40°C to +70°C (-40°F to 158°F) External -40°C to +70°C (-40°F to 158°F)
Sensors	Internal & External (standard sensor length 1m, but can be customised)
Accuracy	From -40 °C to 0 °C $\pm 0.35^{\circ}\text{C}$ (From -40 °F to +32 °F $\pm 0.63^{\circ}\text{F}$) From 0°C to +70°C $\pm 0.25^{\circ}\text{C}$ (From +32°F to +158 °F $\pm 0.45^{\circ}\text{F}$)
Resolution	0.1°C (0.1°F)
Sensor response time	Internal Sensor – T90 of 20 minutes in moving air External Sensor – T90 of 5 minutes in moving air
Memory	32,000 samples (16,000 samples per sensor)
Software	ESCORT Console (free to download via our website)
Sampling Frequency	1 seconds to 10 days
Time and date	Real time clock, accuracy better than 1 minute per month at ambient Multiple time zones supported
Security	Password protected (programmable using Escort Console software)
Power Source	User replaceable 3.6V ½AA lithium battery (Saft LS14250)
IP Rating	IP65 (when external sensor is connected)
Size	Diameter 76mm, height 18mm
Weight	72 grams (including battery)
Case Material	Polycarbonate
Storage Temperature	-40°C to +85°C (-40°F to 185°F) –NOTE: battery temp & electronics excluding plastic case.
Typical battery life	1 to 2 years
Recorder start-up	Via magnet swipe or programmable auto start
LED's:	Green= active, Red = Alarm
Warranty	24 months, excluding battery

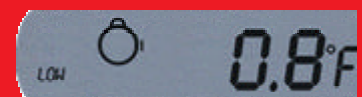
EI-1 E-D-32-L v 1.3 EDLS Reserve the right to change the specifications of this product without notice.



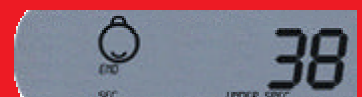
Average reading of external sensor (in degrees Celsius)



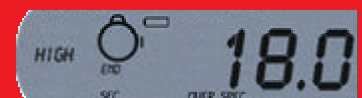
Logger armed for timer start (internal sensor activated)



Lowest recorded reading of external sensor (in degrees Fahrenheit)



Time the internal sensor spent under lower alarm specification at the end of the logging cycle



Time the internal sensor spent over specifications. High alarm is on, battery is low, Trip has ended.